



**adv 4801 creative
sports advertising**

dr. goodman • 3212 Weimer • 392-2704 • rgoodman@jou.ufl.edu

office hours: Tuesdays 3rd to 4th period

objective

- to create deliverables for FOX Sports
- to hone creative skills
- to prepare a professional pitch for a client and/or create a professional presentation package

**this course is meant to inspire creativity and work
more like a studio portfolio class than a typical lecture course.**

there is no textbook for this course.

evaluation

peer evaluations	15%
research	20%
mid-term check in	10%
rough drafts	20%
final presentation	10%
deliverables to client or competition (final project)	20%
attendance (at meetings/ class)	5%

attitude, effort, being late, etc. can either increase or decrease your grade. keep in mind the client's impression of your work will weigh heavily on your final grade. **you must attend meetings with the client (unless excused ahead of time by me).**

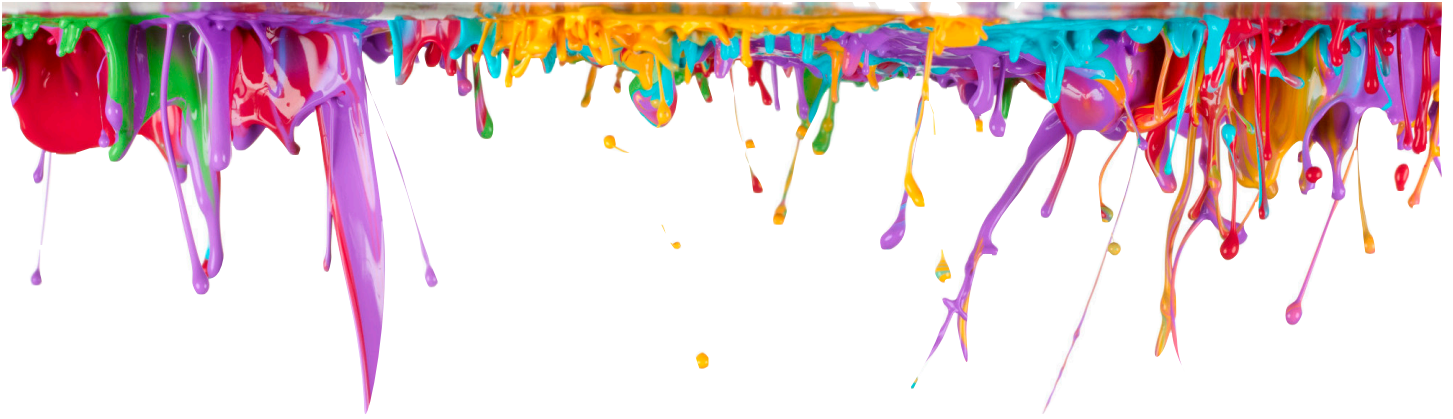
grade scale

A	100-95	Outstanding work. Unexpected, well crafted, on time.
A-	90-94.9	Very good work. Not exactly the most creative idea though. Well-crafted and on time.
B+	87-89.9	Very good. Well-crafted and on time. Maybe a minor flaw. Not a totally creative idea.
B	83-86.9	Good work. Seldom unique, but well-crafted and on time.
B-	80-82.9	OK work. Not unique. Many problems but some promise.
C+	77-79.9	Expected executions; craftsmanship problems; other flaws
C	73-76.9	Expected executions; lapses in craftsmanship, flawed
C-	70-72.9	Expected executions; lapses in craftsmanship and major flaws
D+	67-69.9	Major flaws, with some redeeming characteristic. On time.
D	63-66.9	Little effort. No idea. Poor writing. Messy. On time.
D-	60-62.9	Little effort. No idea. Poor writing. Messy. On time.
F	0-59.9	No effort. Late. Didn't follow assignment or instructions.

additional information of the UF grading policy may be found at:

<https://catalog.ufl.edu/ugrad/current/regulations/info/grades.aspx>





The nature of this project for this class is **confidential and the information proprietary**. Specifics should not be discussed by any of you with people not in the class or on social media. Any needs to use outside resources that might require disclosing any components of this class project must be discussed with me prior to proceeding. Breaching confidentiality results in loss of a full letter grade on final course grade.

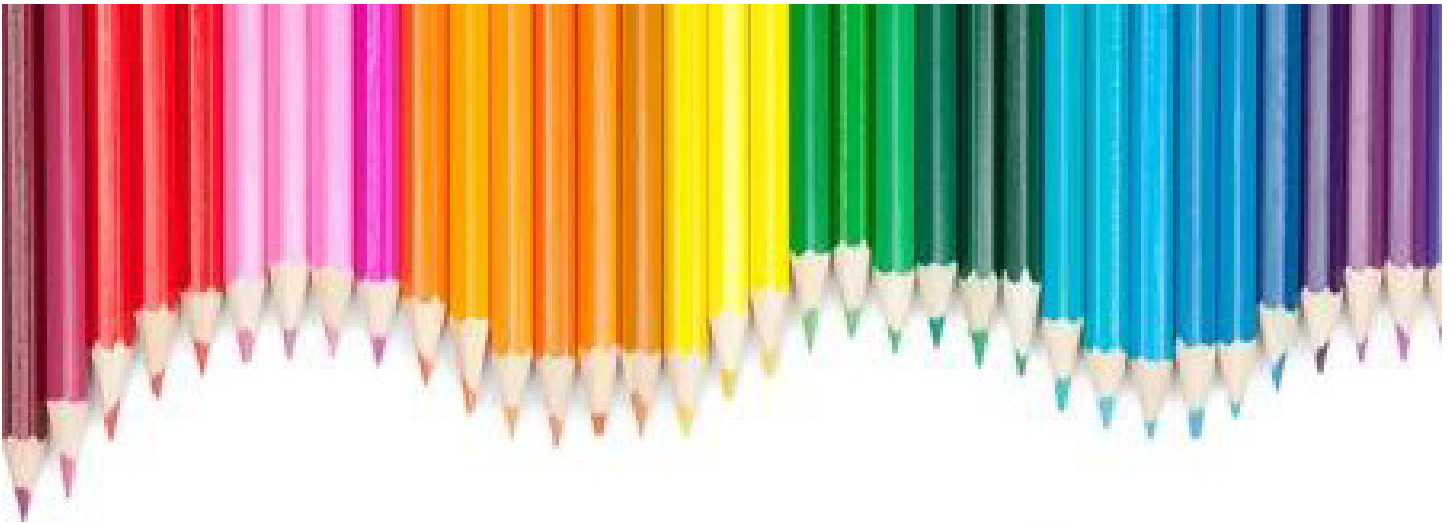
course expectations

- No late work. Deadlines are not negotiable.
- Act professionally. This means being respectful to one another (including me). You should not be on phones or computers during presentations or meetings (unless taking notes). You need to be ON TIME for all meetings, even your team meetings outside of class.
- You need to do your share of the work. You will be evaluated by your peers during the semester (please see evaluations section below)
- The majority of your work is done outside of the class and regular class meetings. So, you will most likely need to make adjustments to your work schedule or other obligations.
- You **MUST** be in class for all client meetings and your practice presentation. If you are ill or have a court date, you are excused.
- **In order to be counted as present and avoid an unexcused absence, you must be physically present in the classroom or meeting room. You may not Zoom in and be counted as attending class.** Why? Because when you start working and your supervisor holds a meeting in the office, they expect you to be there. It is important to be in person. As you know, the dynamics are different.

tentative deliverables (varies based on project. may change after briefing)

You are going to spend more time working on the project outside the classroom so it is **EXTREMELY** important that you understand the processes and deliverables that you should submit on time. missing deadlines is not acceptable! if you miss a deadline in the industry, you're out.

TBD after client briefing



peer evaluation

Generally peer evaluation are very good. However, when they aren't, they should impact your final grade. Your project is, after all, the most important assignment and acts as a final exam. You will evaluate your team members AND list exactly what you did to contribute to the project. I look at what you did on the project if there are disputes on peer evaluations.

Why do peer evaluations? Because it confirms for me the relative contributions of each agency member. Because this kind of evaluation ensures that hard work is recognized and that slacking is too. Because that's how it works in the real world.

When evaluating your peers, make sure to take your time. Don't wait until the last minute. Think through their contribution thoroughly. Once an evaluation is done, it is done. Do not use an evaluation to punish or reward members for their work earlier in the course. A nice evaluation does not inspire someone to work harder, so be honest and fair if someone isn't pulling their weight. Do not "punish" people with whom you do not get along with or disagree with. That is not fair. Evaluations are about the work, not the person. In other words, evaluations are not personal. Finally, be specific and offer practical advice for improvement. For example, don't say "Albert Alligator was irresponsible." Say "Albert Alligator missed multiple team meetings without texting that he wouldn't be there and was late on three deadlines."

You also have responsibilities as the person being evaluated.

- Evaluations are anonymous. I protect your anonymity, and I expect you to show your teammates the same courtesy. Never try to figure out who might have given a particular evaluation or discuss with your teammates. Do not confront others. This is inappropriate and unprofessional behavior.
- You may not negotiate, arrange or influence others' evaluations. This is a breach of academic honesty and is equivalent to cheating on an exam. Thus, the consequences are the same as cheating.
- Everybody gets evaluated in life, including me every year. It can be painful. It can seem unfair. You may feel that your teammates did not understand or appreciate your contribution. Remember, the burden is on you to let them know what you did, not on them to find out. If you did not like your evaluation, try and learn from it and improve. This is the professional and sensible way to deal with disappointment. Less professional ways are lashing out, withdrawing from the team, bad mouthing your team, etc. Before you resort to these, think about if you had been the one to give the disappointing review to a colleague or an employee. You would want them to embrace the feedback and use it to improve. Remember that these evaluations are not about you as a person. They on reflect your work and work can always improve. Critique is a part of the ad business and helps you grow. Learn to be a good listener and self-reflect.

rough drafts

At several points during the semester, I will ask for rough drafts (checkpoints) of your work, which you will bring to your team's meeting with me. These drafts must be complete and not just "here's the general idea." If it looks like you threw it together at the last minute, you will not receive credit for it. If it is not complete, I will deduct 1% off your final grade. You will also have a complete "deck" rough draft. Take this seriously since it is often the difference between an A and other grades in the course. Start designing it now!

attendance/team meetings

You must attend class just like you must go to work. Most of the semester will be team meetings with me. Missing a meeting for an unexcused reason (so you need a doctor's note, funeral notice, etc. to be excused-see University Policy) results in loss of 1/2 letter grade for each occurrence. You **are required** to attend all team and client meetings. **Do not schedule doctor's appointments and the like for briefings with the client, practice presentation for the final or the final.** Keep in mind team meetings will be weekly at the same time; however, do not schedule things during the other 2 hours of our class time. There will be changes to the schedule from time to time and I expect you to be available. Sometimes students think meetings are optional because of the laid back nature of the class. They're not. Finally, there has been an issue in past semesters with attendance at your mock presentation. You must attend this. Do not go on a trip during this time. It is vital to your group, and no, I am not going to reschedule it around you.

Requirements for class attendance and make-up exams, assignments, and other work in this course are consistent with university policies that can be found at: <https://catalog.ufl.edu/ugrad/current/regulations/info/attendance.aspx>.

final project

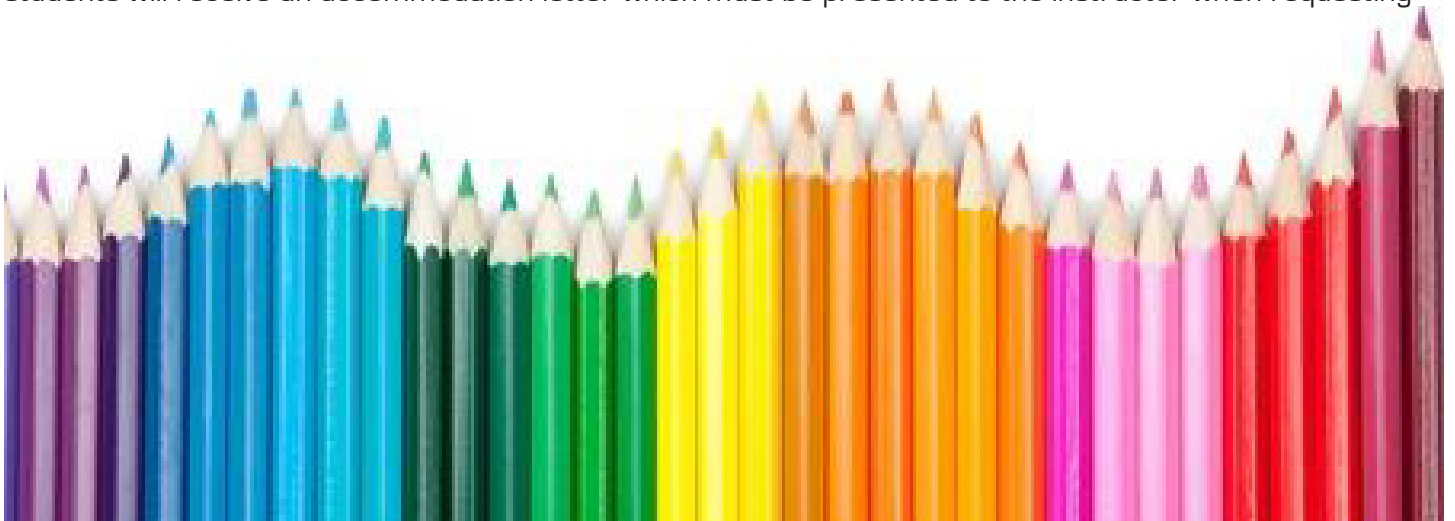
you will prepare polished, professional deliverables for the client using your creative concept. this will be done as a "book" just like in advertising campaigns. a more detailed specification will be handed out in class during the first two weeks.

final presentation

you will be either making a professional presentation to the client or creating a presentation to submit to an awards competition. this presentation will take place toward the end of the semester (either March or April). if you have a live presentation, you will have a dress rehearsal with me to help you improve your presentation skills. we will talk about presenting creative at a later date.

students with disabilities

Students with disabilities requesting accommodations should first register with the Disability Resource Center (352-392-8565, www.dso.ufl.edu/drc/) by providing appropriate documentation. Once registered, students will receive an accommodation letter which must be presented to the instructor when requesting



accommodation. Students with disabilities should follow this procedure as early as possible in the semester.”

student honor code

UF students are bound by The Honor Pledge which states, “We, the members of the University of Florida community, pledge to hold ourselves and our peers to the highest standards of honor and integrity by abiding by the Honor Code. On all work submitted for credit by students at the University of Florida, the following pledge is either required or implied: “On my honor, I have neither given nor received unauthorized aid in doing this assignment.” The Honor Code (<http://www.dso.ufl.edu/sccr/process/student-conduct-honor-code/>) specifies a number of behaviors that are in violation of this code and the possible sanctions. Furthermore, you are obligated to report any condition that facilitates academic misconduct to appropriate personnel. If you have any questions or concerns, please consult with the instructor or TAs in this class.”

online course evaluations

Students are expected to provide professional and respectful feedback on the quality of instruction in this course by completing course evaluations online via GatorEvals. Guidance on how to give feedback in a professional and respectful manner is available at <https://gatorevals.aa.ufl.edu/students/>. Students will be notified when the evaluation period opens, and can complete evaluations through the email they receive from GatorEvals, in their Canvas course menu under GatorEvals, or via <https://ufl.bluera.com/ufl/>. Summaries of course evaluation results are available to students at <https://gatorevals.aa.ufl.edu/public-results/>.

recording of class lectures

Students are allowed to record video or audio of class lectures. However, the purposes for which these recordings may be used are strictly controlled. The only allowable purposes are (1) for personal education use, (2) in connection with a complaint to the university, or (3) as evidence in, or in preparation for, a criminal or civil proceeding. All other purposes are prohibited. Specifically, students may not publish recorded lectures without the written consent of the instructor. A “class lecture” is an educational presentation intended to inform or teach enrolled students about a particular subject, including any instructor-led discussions that form part of the presentation, and delivered by an instructor hired or appointed by the University, or by a guest instructor, as part of a University of Florida course. **A class lecture does not include lab sessions, student presentations, clinical presentation such as patient history, academic exercises involving solely student participation, assessments (quizzes, tests, exams), field trips, private conversations between students in the class or between a student and the faculty or guest lecturer during a class session.**

Publication without permission of the instructor is prohibited. To “publish” means to share, transmit, circulate, distribute, or provide access to a recording, regardless, of format or medium, to another person (or persons), including but not limited to another student within the same class section. Additionally, a recording, or transcript of a recording, is considered published if it is posted on or uploaded to, in whole or in part, any media platform, including but not limited to social media, book, magazine, newspaper, leaflet, or

third-party note/tutoring services. A student who publishes a recording without written consent may be subject to a civil cause of action instituted by a person injured by the publication and/or discipline under UF Regulation 4.040 Student Honor Code and Student Conduct Code.





CREATIVITY TAKES COURAGE

campus resources

U Matter, We Care: If you or someone you know is in distress, please contact umatter@ufl.edu, 352-392-1575, or visit U Matter, We Care website to refer or report a concern and a team member will reach out to the student in distress.

Counseling and Wellness Center: Visit the Counseling and Wellness Center website or call 352-392-1575 for information on crisis services as well as non-crisis services.

Student Health Care Center: Call 352-392-1161 for 24/7 information to help you find the care you need, or visit the Student Health Care Center website.

University Police Department: Visit UF Police Department website or call 352-392-1111 [or 9-1-1 for emergencies].

E-learning technical support: Contact the UF Computing Help Desk at 352-392-4357 or via e-mail at helpdesk@ufl.edu.

Career Connections Center: Reitz Union Suite 1300, 352-392-1601. Career assistance and counseling services.

Library Support: Various ways to receive assistance with respect to using the libraries or finding resources. Call 866-281-6309 or email ask@ufl.libanswers.com for more information.

Academic Complaints: Office of the Ombuds; Visit the Complaint Portal webpage for more information.

week	what we're doing/what's due
1/16	Introduction, Speed teaming, Get up to speed, talk about research
1/23	Client briefing, finish get up to speed, talk about research
1/30	Research briefing.
2/6	Present two video spot ideas (1 TV, 1 DV)
2/13	Secondary research write up due. TBD
2/20	TBD
2/27	TBD
3/6	TBD
3/13	TBD
3/20	Spring break
3/27	TBD
4/3	Mock/practice presentations. Rough draft deck/book due.
4/10	No Class. Goodman out.
4/17	Likely final presentation